



BAY VIEW Historian



VOLUME 2024, NO. 3

www.bayviewhistoricalsociety.org

FALL 2024

Join Us for the Annual Membership Meeting

Date: Monday • October 7 • 6:30 pm
Beulah Brinton House

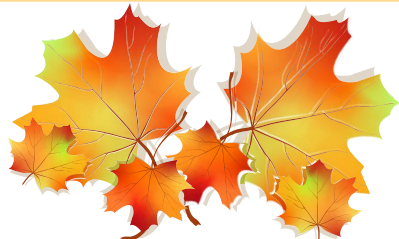
Current members can vote for our slate of new, and renewing board members. Please review the bios for the newest nominees and the reports provided in this edition of the Historian.

Agenda

1. Welcome and Check-In
2. Call to Order
3. President's Report (Margaret Herzfeld)
4. Financial Report (Nicola Ciarro)
5. Membership Report (Nicola Ciarro)
6. Election of Board Members (Susan Ballje)
7. Open Floor / Q&A Session
8. Announcements and Upcoming Events
9. Closing Remarks

Special Presentation by Grace Pelisek: The BVHS House History Project

The most common question that the Bay View Historical Society archives committee gets asked is "What can you tell me about my house?" The BVHS House History Project aims to help answer this question and provide information about the history of their Bay View homes to members of the community. You will learn about how the BVHS archives are working towards this goal, and hear the stories of several historic homes and businesses that have been put together as part of this project!



Beulah Brinton House – Honoring This Historic Property and Home!

BY SUSAN BALLJE

(PART I APPEARED IN THE 2023 WINTER EDITION OF THE BAY VIEW HISTORIAN.)



Ginkgo tree ↑



Back yard clean-up →



← Redbud with trimmed bushes along Pryor Ave

Beulah and Warren Brinton built their Gothic Revival home in 1872-73; raised 3 of their 5 children in Bay View and the family supported an immigrant community for almost 100 years. The Brinton family eventually sold to Audrey and Bob Quinsey in 1974.

Bay View Historical Society, founded in 1979, purchased the historic property in 2005 and 2590 S. Superior Street became its official headquarters. Through the almost 20 years of ownership the society has restored, renovated, and reclaimed the history and significance of the Beulah Brinton House and maintained this Wisconsin historic landmark.

Members of Bay View Historical Society have worked tirelessly to honor and use the property for events and community gatherings. Every donation and contribution have made it possible to sustain the society's mission:

Encourage a sense of community by preserving, celebrating and sharing Bay View's rich heritage.

This year more effort has been made to improve the gardens and yard surrounding Bay View's historic home.

A group of volunteer gardeners have been actively planning and working to improve the grounds. Neighbor Joe Ehlinger has been faithful in mowing the large lawn for several years and is so appreciated! Saturday mornings have members (Nancy Tawney, Susan Ballje, Jeanne Troglia, Anne Maedke, Jane LeCapitaine) appear with trowels, clippers, shovels and rakes to continually manage the gardens and landscape. The lovely spring and summer weather has provided much growth and interest.

continued page 3



Board & Committee Contacts:

President

Margaret Herzfeld
president@bayviewhistoricalsociety.org

Vice President

Drew Formentini

Treasurer

Nicola Ciurro

Secretary

Becca Schnabel

Board Members:

John Edquist Grace Pelisek
Russ Grabczyk Quinn Schwellingner

Annual Dinner

Heather Taylor

Archives

Kathy Mulvey & John Sargent

Beulah Brinton House

Drew Formentini

Education and Community

Becca Schnabel

Finance

Nicola Ciurro

Landmarks Historian

Ron Winkler

Marketing

Quinn Schwellingner

Membership

Nicola Ciurro
Joe Sliker
membership@bayviewhistoricalsociety.org

House Rentals

Drew Formentini
rentals@bayviewhistoricalsociety.org

Newsletter Editor

Kevin Petajan

Newsletter Designer

Kat Sena

Membership

\$20 Individual/\$17 Seniors (Age 65+)
\$30 Household/\$25 Senior Household
\$30 Non-Profit/Small Business
\$55 Corporate
Philanthropic Levels:
\$100 Friend
\$500 Leader
\$1,000 Patron
\$2,500+ Benefactor

Bay View Historical Society
2590 S. Superior Street, Bay View, WI 53207
www.bayviewhistoricalsociety.org

Bay View Historical Society is a non-profit organization with 501(c)3 status operating for educational purposes.

The Bay View Historian is published four times a year by The Bay View Historical Society.

President's Message

Dear Members and Friends of the Bay View Historical Society,

As I sit down to write my final President's Message, I am filled with a profound sense of gratitude and pride for all that we have accomplished together. Serving on the board for the past six years of this incredible organization, first as the Marketing & Communications chair, then as Vice President for two years and finally as President for these last two, has been an extremely rewarding experience.

I have always been driven by a passion for our community's rich history and a commitment to preserving and sharing it with future generations. Together, we have worked tirelessly to protect our historical landmarks, educate the public, and celebrate the unique stories that make Bay View such a special place.

I am particularly proud of the projects we have undertaken during my presidency. From the multiple restoration projects of the Beulah Brinton House to the expansion of our community events to our financial stewardship, our collective efforts have ensured that the legacy of Bay View remains vibrant and accessible.

None of this would have been possible without the unwavering support of our members, volunteers, and the community at large. Your passion, dedication, and hard work have been the driving forces behind our successes. I am deeply grateful for the friendships and partnerships that have been forged along the way.

As my term comes to an end, I am excited to welcome the new leadership that will carry our mission forward. I have full confidence in their abilities to guide the Bay View Historical Society with vision and integrity. Although I am stepping down from my official role, I will continue to be an active member and ardent supporter of our society. You can count on my ongoing commitment to our shared goals and my presence at future events and activities.

Thank you once again for a wonderful six years on the board of directors. It has been an honor and a privilege to serve as your President. I look forward to seeing the Bay View Historical Society thrive under new leadership and to witnessing the continued celebration of our cherished history.

With heartfelt gratitude and warmest regards,

Margaret Herzfeld
President, Bay View Historical Society

BVHS Membership Report

AUGUST, 2024
JOSEPH SLIKER & NICOLA CIURRO

As of August 12, 2024 there are 225 active/paid memberships in the BVHS Contacts (Past Perfect) database which are paid/up to date at least through the end of the current year.

PLEASE: Check the reminder line under *your address* on this, or prior issues of the Historian. We will typically continue to send the Historian through the year after your membership expires in order to encourage continued membership. If yours is expired, **PLEASE RENEW!**

Current Active (*dues paid*) Members

	2020	2021	2022	2023	2024
Household	29	35	32	30	20
Individual	35	55	40	35	37
Senior Household	72	76	67	75	67
Senior Individual	87	100	96	99	89
Corporate	3	2	1	1	2
Nonprofit-Small Bus	5	4	4	2	2
(Unclassified Donors)	(not reported)				8
Total Paid Memberships	231	272	240	242	225
Lifetime Members*	(not reported)			26	24
Honorary Members**	80	85	72	48	50
Mailing Only***	50	35	50	34	49

* Although Honorary & Lifetime members are not required to pay dues, some continue to do so, and/or make annual contributions.

** NOTE: ALL Honorary memberships will expire at the end of 2024. If you are/have been an Honorary member, please remember to subscribe to the BVHS at a membership level of your choosing during the upcoming Appeal

*** (Historian sent at no charge to promote visibility in the community)

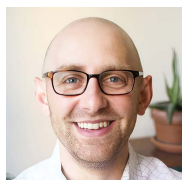


BVHS- Board of Directors Nominations 2024-25

SUSAN BALLJE, CHAIR, NOMINATIONS COMMITTEE

Each year at the Bay View Historical Society's annual meeting the election of board members is held to sustain the vitality and mission of the organization. Monday, Oct 7th @ 6:30 pm is the date for this year's annual meeting. **PLEASE JOIN US to vote for our board and provide support for re-energizing the efforts to encourage a sense of community by preserving, celebrating, and sharing Bay View's rich heritage!**

As board members complete their terms, new members are reviewed and nominated based on the interests and needs of the board's strategic plans. We are very pleased to be nominating the following to serve on the board of directors for 2024-2027:



Drew Formentini – after filling an open position for 2 years and chairing the Beulah Brinton House committee as well as serving as Vice-President, Drew is willing to serve for another 3 years.



Grace Pelisek – after filling an open position for 2 years and serving on the archives committee along with supporting the annual dinner, Grace is willing to serve for another 3 years.



Steph Salvia – a newer member of the Bay View community with many years of experience and leadership in nonprofit organizations. Steph Salvia is the Executive Director for Joy Engine in Milwaukee, an arts nonprofit whose mission is to activate creative space through art.

aim is to use the arts to unify communities with free family-friendly accessible experiences. She joined the organization with over 15 years of experience in nonprofit management, specifically business district leadership, running both Brady Street Business and Downer Avenue's Business Improvement Districts. She also owns her own event production company and has been producing events that range from a few hundred to over 50,000 attendees. Current clients include Lakefront Festival of Art, the Milwaukee Marathon and as a consultant for several Milwaukee-area business districts.

When Steph is not in full-on event-production-mode, you can find her out walking along the lake, reading, or

attending everyone else's events with her husband. She is happiest smack dab in the middle of a large crowd even though she is only 5' tall! She and her husband are recent empty nesters and absolutely loving their new condo in Bay View.



Suzanne Jurva – wonderfully established member of Bay View with interest and talents in sharing stories, researching people's accomplishments, and creating connections with others.

Suzanne Jurva is an award-winning filmmaker, creative storyteller, former studio and production executive, and entrepreneur. Suzanne created the research department for Steven Spielberg at DreamWorks SKG. She was a feature film development executive supervising many Academy Award-nominated and winning films, including Saving Private Ryan, Gladiator, Amistad, Minority Report, AI, The Lost World, and The Prince of Egypt. Since leaving Dreamworks, she has produced and directed numerous award-winning films that screened globally at over fifty festivals. Suzanne produced the narrative feature Pet Names and was the NASA liaison and key research producer on Tom Hanks' IMAX documentary, Magnificent Desolation: Walking on the Moon.

Other credits include the PBS documentary Changing Keys: Billy McLaughlin & the Mysteries of Dystonia, Yoopera! Her current projects include producing/co-directing My Teacher in Space, a short documentary, and the narrative feature PINK MOON (2025). Suzanne previously served as Director of the Milwaukee Filmmaker Alliance, the industry pillar of Milwaukee Film. She is a Steering Committee member of Action!Wisconsin, a grassroots organization to bring Film Tax Incentives to Wisconsin in 2024. She recently started serving on the board of ImagineMKE.

Suzanne is a joyful Bay View resident. She is a proud Big Sister and supporter of Big Brothers Big Sisters of Milwaukee and has served as a board member of the Big Advisory Board. You can often find her outside chatting with her wonderful neighbors, escorting her dachshund around the neighborhood to see all his besties, or gardening with her husband and pet tortoise.

The Board of Directors looks forward to seeing you on Monday, Oct 7th and helping to keep the 45-year momentum going forward as a vital part of Bay View's history.

Beulah Brinton House *cont. from pg 1*

With more landscaping efforts, Jean Waldo, a long-standing member offered support for additional trees to enhance the appearance and ecosystem around the Beulah Brinton House. Her generous donations have provided for a Sugar Maple, Bur Oak, and Ginko that have been planted and are an asset to the property. Additionally, Susan Ballje has donated funds for a Redbud tree that has been planted in the yard along Pryor Ave. The landscape planning and decisions have been based on Lee Somerville's book "Vintage Wisconsin Gardens" and approved by the Board of Directors.

The Beulah Brinton House is now available for private rentals and community gatherings, please visit our website – <https://bayviewhistoricalsociety.org> to view the virtual house tour, come to an open house on 1st Saturday of every month, and join us for upcoming events!

Bay View Historical Society will forever respect and honor the Brintons' love of community and welcome all of our visitors!



Gazebo with trimmed bushes along alley



Sugar maple with trimmed gardens



Bur oak

Preserving Our Heritage

Without heritage, every generation starts over. The Bay View Historical Society (BVHS) exists to celebrate and preserve the heritage of this unique area known as Bay View. Please consider remembering BVHS in your will or other estate plans so that it can continue to exist for generations to come.

For more information, contact: admin@bayviewhistoricalsociety.org





Where Have All the Truck Farms Gone?

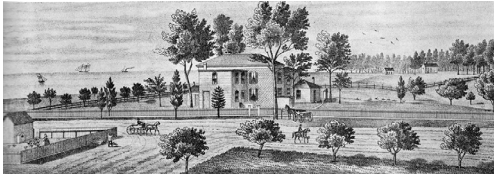
The Van Beck Family and Disappearing Farms

BY RON WINKLER

One of the themes of this year's August 3rd Southwestern Border Walk was thriving Town of Lake farms in this area of Bay View. Examples are, the dairy farm on which the old Nash/American Motors/Chrysler/Stellantis campus was built. To the west, farms along Howell Avenue south of Oklahoma Avenue were owned by the Griffin and Van Beck families. To the north, Baran Park was established on part of Enoch Chase's old farm.

To the east, Russell Bennett built his house at today's 3317 S. Kinnickinnic Avenue in 1855 on his 160-acre farm. Lastly, South Shore Park occupies a portion of Elijah Estes' old farm. Although it is our final example, it is not the final farm that once existed in the Bay View area of the Town of Lake.

Lake's original settlers were subsistence farmers. When they arrived in 1836, the land was heavily wooded. These pioneers were required to build a home and develop the land, which meant clearing it of trees and establishing a farm.



This sketch of the Estes farm is from the 1876 Milwaukee County Atlas.

Over time, some turned to truck farming while others sold all or parts of their land to be developed for housing or businesses. When Milwaukee County's airport moved to the Town of Lake in 1926, airport expansion began its consumption of farmland.

Theodore Van Beck

Several generations of Van Becks owned farms throughout the Town of Lake. Theodore Van Beck (1844-1878) came to Milwaukee in 1854 from Germany. He purchased twenty-four acres bordered by Euclid Avenue (north), Ohio Avenue (south), Howell Avenue (west) and Pine Avenue (east). He and his wife Minnie von Vonderen had eight children.

Other Van Beck members owned farms south of Howard Avenue and east of Howell Avenue. Van Beck Avenue, one block south of Howard Avenue, was named in 1926 by the Town of Lake.

Thomas Van Beck built a cream city brick farmhouse in 1870 on a knoll at today's 3954 South Taylor Avenue.



Thomas Van Beck

George Van Beck grew horseradish. His farmhouse is still standing at 529 East Howard Avenue. His brother John and wife Mary established a seventeen-acre farm at 300 West Layton Avenue in what was then the Town of Lake.

Ray Van Beck, Last of the Truck Farmers

John and Mary Van Beck's son Ray grew up on their previously mentioned farm on W. Layton Avenue. In 1950, Ray became the third generation of Van Beck farmers when he bought 80 acres at 1301 E. College Avenue in Oak Creek and established Van Beck Farms. It included his familiar roadside stand on the southwest corner of Pennsylvania and College, which operated until 2006. Van Beck took agriculture courses at the University of Wisconsin in Madison and Cornell University in Ithaca, NY. He later leased more land for his truck farms, so called because farmers took their produce to market in a truck. Van Beck had up to 150 employees, growing vegetables which included green onions, lettuce, tomatoes, broccoli and beets. He started his vegetables in greenhouses in the winter using hotbeds.



A truck farmer on his way to market.

By 1976, as truck farming declined, Van Beck Farms was the largest truck farm in Milwaukee County and the only county farm licensed to hire and house migrant workers. Throughout the 1970s and until 1988, Van Beck sold his wholesale produce to local chains, including Roundy's, Kohl's and Sentry stores.

Winds of Change, Vanishing Farms

Farms disappeared over the years due to several factors. After World War II, the airport extended its southern border at Grange Avenue to College Avenue. From the mid-1970s on, development of farmland along Howell Avenue went into overdrive. In Milwaukee, the farmland on Howell Avenue across from the airport was converted to businesses. Likewise in Oak Creek, farmland on both sides of Howell Avenue disappeared.

Drought in 1988, along with the evolution in farming technology, put an end to Van Beck's truck farming. He continued to sell produce at his roadside stand and expanded to thirteen greenhouses, growing more flowers and other bedding plants. Additionally, he grew sweet corn and pumpkins, and obtained produce from other farmers. Customers also came for pick-your-own tomatoes and pumpkins.



Farmhands taking a break on a Town of Lake truck farm, late 1940s. These were not Van Beck's workers. The author's father Carl is third from the right.

Van Beck had to reduce his workforce, which was comprised of local workers as well as migrant workers from Mexico. He would hire friends or relatives of his current workers. Van Beck appreciated his employees and acknowledged that his business bloomed because of them. He was the envy of many growers for having such a reliable work force. However, new minimum wage laws made it harder to retain such a large workforce.

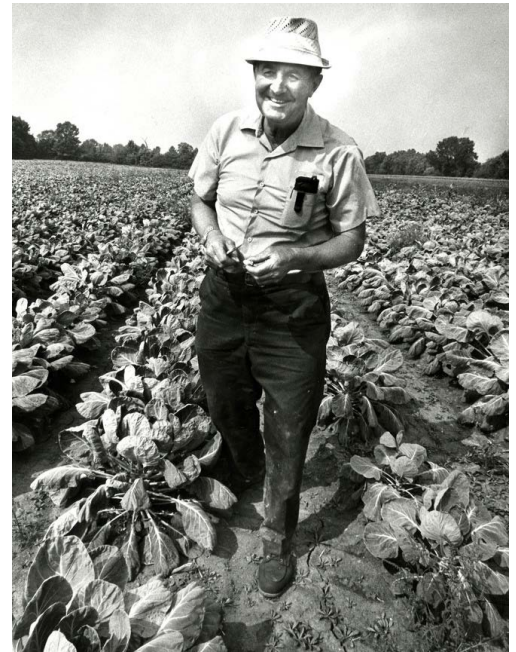
Van Beck held on. Milwaukee County forced him to sell his land for future airport expansion, but he was allowed to lease the land for farming.

The next area farm to close was the popular Mahn Farm on Howell Avenue in Oak Creek around 1997. Until just recently, there were still roadside stands along Rawson Avenue.

Van Beck was the sole owner and knew that when he closed the barn door, it would be the end of an era. His three daughters had helped when they were young, but none were interested in taking over.

Van Beck realized that in life, as in farming, everything had a season. In 2006, at 88, he was ready to retire. He had always figured his loyal workers would miss the paychecks. It turned out that his workers were ready to hang it up, too. They sat down to talk and realized they were doing this for each other. Each thought that they were doing it for the other.

Van Beck continued living on the farm until three weeks before he died on August 22, 2010 at 92. He was never a smoker, but was diagnosed with lung cancer in July 2010 and died of complications of the disease.



Ray Van Beck, outstanding in his field, 1976.

Epilogue

In a 2008 nod to Town of Lake farms, Milwaukee's Common Council designated the 13th Aldermanic District, which includes the area south of Morgan Avenue, as "The Garden District." There are numerous boulevard gardens and residents and businesses are encouraged to plant gardens. Most important are the community gardens, headquartered on S. Sixth Street and E. Howard Avenue, across from the water tower. They extend north and south along the east side of Sixth Street.



Passing, Seen

BY BILL O'BRIEN

Milwaukee's original street curbs were made of wooden planks, driven in at a property's edge. An 1891 ordinance required replacement of worn boards with sturdy stone. Owners could opt to place their own 3-inch-thick limestone slabs or have the city install pieces 4-inches thick, the latter quarried in Minnesota.

Bay View's oldest remaining curbs are made of limestone slabs installed between the 1870s and the 1910s. Three or four inches thick and set on edge, some are sunk to ground level. The street faces of others are as much as 9-inches tall. While many pieces are tipping, none is dislodged far enough to measure their full height, which I suppose is 12-16 inches. My sample of weathering top edges showed some slabs to be 4-feet long, many just over 5 or 6-feet, and a few an impressive 88-inches (7'4") long, a challenge for fellows to set with pickaxes and pry bars.

The long, layered deposition of calcium from the shells and bones of ancient sea creatures gives the metamorphic stone an ability to split easily, a quality that provides consistent 3 and 4-inch slabs, and after a century of Wisconsin winters, a tendency to break into finer layers.



Limestone has been succeeded by concrete curbs along the neighborhood's most-trafficked streets.

At this writing, a vividly painted stretch of 4-inch curbstones remains in place in the 400 East block of Homer Street, opposite St. Augustine's Church. The slab tops are sprayed in a bright turquoise green that looks like a marking for removal. The color is not an evident signal for a parking restriction; neither is it the lime-chartreuse *au courant* for Brat Girl Summer.



You can find 3-inch-thick limestone slabs opposite Puddler's Hall, in the triangle formed by St. Clair Street and Delaware and Potter avenues. Be sure to note the monument within the plot, commemorating Pietro Giacomina and Eugene Trocano, Italian-American casualties of World War I. The flagpole and memorial plinth were dedicated in 1936 by the Italian-American Civic Association of Bay View.

Bay View Historical Society Needs Your Help!

The Bay View Historical Society is seeking dedicated individuals to join our team! We're looking for community-minded professionals who can serve as Board Members or contribute on a project basis. We also welcome those who can offer their skills as a resource from time to time.

Positions Available:

- Legal: Provide guidance on legal matters, including contracts, compliance, and governance.
- Accounting: Oversee financial records, budgeting, and financial planning.
- Fundraising: Develop and execute fundraising strategies to support our mission.



Whether you have a few hours a month or are looking to take on a more significant role, your expertise is invaluable to us. Together, we can ensure that Bay View's rich history is preserved and celebrated.

Interested? Reach out to Drew Formentini at: drew.formentini@gmail.com

Is it Time to Renew Your Membership?

Please look at your Bay View Historian mailing label to see when your membership will expire.

All yearly membership terms run from January 1 thru December 31. Any new memberships will be current through the end of the calendar year (one year plus pro-rated months). Members receive our newsletter, *The Historian*, with interesting articles and the latest information on all our events as well as discounts at a variety of Bay View merchants.

Thanks for supporting the programs of the Bay View Historical Society!

PLEASE RENEW MY MEMBERSHIP IN THE BAY VIEW HISTORICAL SOCIETY

Membership Dues

- Individual.....\$20
- Household.....\$30
- Senior (65 or older).....\$17
- Senior Household.....\$25
- Nonprofit/Small Business\$30
- Corporate.....\$55

Philanthropic Levels:

- \$100 Friend \$1,000 Patron
- \$500 Leader \$2,500+ Benefactor

- Also enclosed is a tax deductible contribution of \$ _____
- Enclosed is my check in the amount of \$ _____

Please make checks payable to:
Bay View Historical Society

Name _____

Address: _____

City: _____

State: _____ ZIP: _____

Phone: _____

E-Mail: _____

- Please contact me! I'd like to volunteer for a project or committee.
- Please save a tree and send **The Historian** to the email address above.

SEND YOUR MEMBERSHIP RENEWAL TO:

The Bay View Historical Society
Attn: Membership
2590 S. Superior Street
Bay View, WI 53207



BVHS Financial Statement

DEC 2023 - JULY 2024
NICOLA CIURRO

ASSETS:	
Checking	\$3672.12
Business Signature Money Market Account	\$46,797.53
Business 1 Year CD	\$78,761.56
Savings account	\$3,730.32
Total Liquid Assets	\$132961.53
DIRECT PUBLIC SUPPORT:	
Memberships, Events & Donation	\$17,267.36
Interest Income Bank	\$2,567.82

EXPENSES:	
Insurance	\$ 2,382.00
Printing and Publishing	\$ 3,114.98
Routine Maintenance	\$ 185.00
Cleaning	\$ 885.00
Snow Removal	\$ 330.10
Gas/Elec	\$ 1,204.00
Internet	\$ 513.60
Water	\$ 380.89
Office Supplies/Collections	\$ 418.78
House Supplies	\$ 105.16
Utilities	\$ 230.20
Fund Raiser	\$ 3,242.00
Store Supplies	\$ 593.75
Volunteer Appreciation/Gifts	\$ 138.77
Credit Card and Bank Fees	\$ 25.20
City Taxes	\$ 65.00
Landscaping	\$ 1,092.00
Lawn Care	\$ 80.00
Event Expenditures	\$ 475.76
Web Site Expenses	\$120.00
Camera System	\$ 158.95
Total Expenditures	\$15747.14

Christ Church Landmark Dedication

BY RON WINKLER



Christ Church, 915 E. Oklahoma Avenue, became the Bay View Historical Society's (BVHS) 29th landmark on Saturday, June 15th. The dedication was free and open to the public.

Landmarking took place at 1:00 PM with BVHS President Margaret Herzfeld welcoming everyone and Landmarks Historian Ron Winkler giving a history of the church. This was followed by remarks from council president Jim Wick. Ron Winkler and Jim Wick then presented the plaque. Refreshments and a social followed in the church's Fellowship Hall.

The event was photographed by Society member Kevin Petajan. Everyone received a sixteen-page full-color souvenir booklet which contained the history of Christ Church as well as pictures of the church. BVHS President Margaret Herzfeld and her mother Sue Herzfeld welcomed guests and handed out booklets. The booklet was written by Ron Winkler; the graphic design and layout were by Kevin Petajan.

For the history of Christ Church, see the Spring and Summer editions of the "Bay View Historian."



Landmarks Historian Ron Winkler addressing the assembled multitude.



Christ Church Council President and Bay View Historical Society Landmarks Chair Ron Winkler unveil the plaque.



Bay View Historical Society President Margaret Herzfeld and Landmarks Chair Ron Winkler frame Christ Church's landmark plaque.





August Walk 2024

BY RON WINKLER

The Bay View Historical Society (BVHS) completed its series of nine “Walking Tours of Bay View” with “The Southwestern Border Walk” on Saturday, August 3rd. Each participant received a copy of the new brochure, which was researched by Ron Winkler and designed by Kevin Petajan. This series was inaugurated in 2003 with “The South Shore Walk.” This was the 20th annual walk, interrupted by Covid in 2020.

Thanks to Christ Church and Chuck Terlinden for hosting our pre-walk gathering. We began and ended at the church, 915 E. Oklahoma Avenue. Thanks also to the welcoming committee of BVHS President Margaret Herzfeld and her mom Sue Herzfeld for registering the walkers. Thanks also to Kevin Petajan, our official photographer.

Tour guides Ron Winkler and Sean Regan led separate groups and shared their knowledge of Bay View with the walkers. The temperature was 90 degrees and sunny.

The walk paid homage to Paul Gauer (1881-1961), Bay View’s Socialist alderman (1920 to 1936), who worked for the betterment of Bay View. He was responsible for Town of Lake acquisitions that expanded Milwaukee’s and Bay View’s borders into the area of “The Southwestern Border.” Gauer Circle is named for him.

The walk covered the neighborhood south of Oklahoma Avenue to Ohio Street between Clement Avenue and Howell Avenue. Most of the emphasis was on that area’s diverse housing stock. The style of homes included duplexes, bungalows, Tudor, Cape Cod, Colonial, Mediterranean and Storybook style. In 1998, Historic Milwaukee, Incorporated, presented a tour of homes titled, “The Bungalow, America’s Arts & Crafts Home.” Although the tour was in the Washinton Heights neighborhood, the booklet mentioned the bungalow neighborhood in the “Streets south of Humboldt Park between Logan and Adams Avenues”.

Mark your calendars for walk number 21, tentatively scheduled for Saturday, August 2, 2025.



Ron’s Group



Sean Regan and Ron Winkler



Susan & Margaret Herzfeld

Return Service Requested

Where in (Historical) Bay View?

BY RON WINKLER

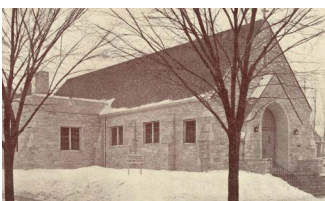
Do you recognize this Bay View landmark? Look for the answer in the next issue of The Historian.



Answer to last issue's quiz (Summer 2024):

Unity Lutheran Church was founded in 1931 by a group of

German-speaking Lutherans who left St. Lucas Lutheran Church. They purchased a house at 3103 S. Herman Street and remodeled it into a white chapel. By 1939, the congregation outgrew the chapel and built this Lannonstone Gothic Revival edifice. Continued growth required two more building projects. The first was in 1949 and the second, in 1967, was the construction of the \$400,000 educational annex to the west.



Calendar of Events

Please check the BVHS Website BayViewHistoricalSociety.org for upcoming events.

Parks Bike Ride

Sunday • September 8 • 2:00 pm
Please check the BVHS Website BayViewHistoricalSociety.org for details.

Monthly Open House

Come visit the historic home of Bay View pioneers Beulah and Warren Brinton.
1st Saturdays from 1:00 – 4:00 pm
Beulah Brinton House

Saturday • September 7
Saturday • October 5
Saturday • November 2
Saturday • December 7

BVHS Board Meetings

Board of Directors meetings are usually held the second Wednesday of the month at 6:30pm. The format is hybrid, meeting in-person at the Beulah Brinton House and via Zoom, and are open to members.

Wednesday • September 11 • 6:30pm
Wednesday • October 9 • 6:30pm
Wednesday • November 13 • 6:30pm
Wednesday • December 11 • 6:30pm

BVHS Annual Membership Meeting

See page 1.

Monday • October 7 • 6:30 pm
Beulah Brinton House

