



Bay View Historical Society
2590 SOUTH SUPERIOR STREET
BAY VIEW, WI 53207

*All of us here at Bay View
Historical Society wish you
all a very blessed Christmas and
Chanukah and much happiness
in the coming new year!*

Non-profit
Organization
U.S. Postage
PAID
Permit No. 4184
Milwaukee, WI

Return Service Requested



BAY VIEW Historian

VOLUME 2014, NO. 6

DECEMBER 2014

Happy Birthday Bay View Historical Society

BY RON WINKLER

Author's Note: This article marks the beginning of the Bay View Historical Society's 35th anniversary celebration. Watch for the many events that will be held throughout 2015.

In 1979, the Bay View community celebrated its centennial. Bay View was incorporated in 1879 as a village and annexed by Milwaukee in 1887. John Gurda, a native Milwaukeean and Bay View resident who was getting started in 1979, wrote a book entitled Bay View, WI. Gurda said, "Bay View is a city within a city and has strong community identity. There is a small town type of feeling here. People are from here, go to school here, graduate from Bay View High School and then go on living here. There is a lot of stability and a strong community feeling."

The anniversary celebration was held on July 8, 1979, with most activities at the Humboldt Park Chalet. They included an 11 a.m. worship service, a Country & Western Show at 1:15pm, a Jazz Concert at 4pm, "Music of Yesteryear" by the Milwaukee Symphony Orchestra at 7:30pm, and fireworks at 10pm. All events, including an arts & crafts show on Montana Street, were free. Bright yellow Centennial buttons were worn by everyone.

Bay View Historical Society was formed as part of the anniversary after neighbors Paul Kohlbeck, a teacher at Fernwood Elementary School, and Audrey Quinsey came up with the idea. Audrey and her husband Bob lived in the Beulah Brinton house, 2590 South Superior Street. The house was purchased in 2003 by the Bay View Historical Society for its headquarters.

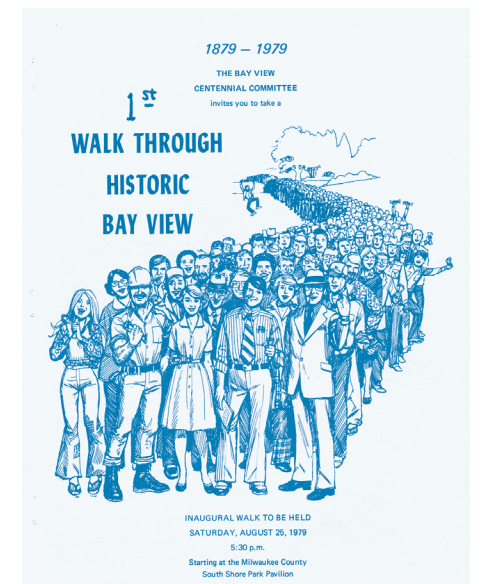
walking tour titled, "Night in Old Bay View." It started at 5:30 p.m. and visited ten historical sites. The South Shore Pavilion, converted into an old fashioned beer garden with folk music, was the site for a slide program on Historic Bay View narrated by John Gurda. A fireworks display capped off the night's events.

The following year, the Milwaukee County Historical Society published Bernhard C. Korn's The Story of Bay View, written as his master's thesis in 1936. It was an account of the Bay View community from the time of the Native American Indians up to the time of his thesis. Korn taught German and history at Bay View High School beginning in 1915 and was named vice-principal in 1922. Upon the death of Principal Gustav Fritsche in 1939, Korn was promoted to Principal, a post that he held until he retired in 1960.

The Bay View Historical Society was very active from the beginning. It began publishing a newsletter in February 1980 and held annual walking tours. It also began making the community aware of its history by designating landmarks throughout the community. Land marking continues today. Each newly land marked building receives a plaque during a ceremony that is free and open to the public. At the ceremony, the history and significance of the landmark is recounted. Below are the society's landmarks with the building's construction date in parentheses (if known), followed by the date of the landmark designation.

Beulah Brinton House 2590 S. Superior Street (1872-73) May 15, 1983

Bay View United Methodist Church 2772 S. Kinnickinnic Avenue (1888) May 6, 1984



Cover from the booklet for the society's first walking tour, August 25, 1979.

State Historical Society Marker for Bay View
Rolling Mill Northeast Corner of Superior Street
and Russell Avenue June 2, 1985

Puddler's Hall 2461-63 S. St. Clair Street
(1873) May 3, 1986

St Augustine School 2507 S. Graham Street
(1888) August 28, 1988

St. Lucas Lutheran Church 2605 S. Kinnickinnic
Avenue (1888) October 16, 1988

Estes House, 2136 E. Estes Street (1880-81)
June 4, 1989

Kneisler's White House Tavern 2900 S.
Kinnickinnic Avenue (1891) October 6, 1991

Club Garibaldi, 2501 S. Superior Street (1907)
October 1, 1992

Continued on Page 4

Calendar 2014

Sunday, November 30
Lil' Rec House Concert
A Tribute to Larry Penn
Beulah Brinton House
2590 S Superior Street
4 PM

Saturday December 13
Holiday Gathering
Beulah Brinton House
2590 S Superior Street
3 – 6 PM

December 15, 16, 17
Avalon Theater Opening
See schedule in this issue

Saturday February 14
Valentine's Day High Tea
Beulah Brinton House
2590 S Superior Street
2 – 4 PM

UPCOMING BOARD MEETING
Thursday, December 4
Beulah Brinton House
6:30 PM

Welcome New Members!

We welcome the following new members who joined the Society since September 1st:

Wendy Cooper

Frank & Jane Ferraro

Chris & Ashley McFadin

Susan Lee Swaer

Martin Ziech

In Memory of

Florence A. Bethke

James M. "Jim" Kupferschmidt

BAY VIEW HISTORIAN

NEWSLETTER of the BAY VIEW HISTORICAL SOCIETY
 February 1980

President's Message

I would like to recall to you the stated objectives of the Bay View Historical Society, which are to gather, preserve, and disseminate artifacts and information relating to the Bay View area. Unwritten but understood by most was the premise that these objectives were to be reached if possible without duplicating County and State Historical Society programs.

John Utzat's suggestion, made during committee discussions, that a walking tour be considered as a project to bring attention to the budding Society led ultimately to the Walk Through Historic Bay View. It was held in conjunction with the Bay View Centennial function in South Shore Park, Utzat and I acting as co-leaders. The Walk disseminated information already accumulated in Bay View and did not duplicate other historical programs. Ensuing publicity in one of the local tabloid sheets completely omitted mention of John Utzat's contribution to the success of the venture. I mention this omission by way of prefacing an announcement of a second Walk through another section of Bay View, to be held later in the year and to the organization of which Mr. Utzat will again contribute his time and talent.

This brings me back to objectives and planning. The Carol Zillman Memorial contributions and Theresa Statz's gift of Bay View High School memorabilia indicate that our Society will be drawn into traditional areas of activity such as storage or materials and the development of means to present displays and information to the public. It will be difficult to finance such programs with membership dues alone so a Fund Raising Committee has been organized and activated under the leadership of Helen Hankwitz. Our financial objective must be self sustenance and our plans must be tailored to our bank account.

In conclusion, I remind you that in Bay View we still have the richness of heritage that originally led us to believe that it was worthwhile to form our own Historical Society. There are still hundreds of untold stories to be saved from oblivion. There is still plenty of work for anyone who would put his mind to it. There is still excitement in living today, for what we do today becomes the history for tomorrow.

Ray Bethke,
 President
 Bay View Historical Society

First page of the first Historian ever published.



Milwaukee from the Bay c. 1912

History Timeline: Wisconsin's Winter Wonderland

BY LISA ANN JACOBSEN

- 1847 Wisconsin becomes 30th state.
 - 1856 The Pottawatomie Massacre.
 - 1861 US Civil War 1861-1865.
 - 1862 The Homestead Act.
 - 1872 Beulah Brinton House built.
 - 1873 Record temperature of -43°F in LaCrosse on January 18.
 - 1876 Battle of Little Big Horn / Custer's Last Stand.
 - 1877 Telephone service begins in Milwaukee with fifteen subscribers.
 - 1879 First Woolworth 5 Cent Store opens.
 - 1880 First electric lights in Milwaukee.
 - 1880 11 ft. of snow in Milwaukee between February 12 and March 23.
 - 1886 Bay View Massacre.
 - 1886 Record snowfall in a single season in Milwaukee: 109.80"
 - 1888 The Great Blizzard hits United States. Green Bay sets record of 147.70" for the season, and record temperature of -36° F on January 21.
 - 1890 First electric trolleys run in Milwaukee.
 - 1896 24" of snow in 24 hours in Bayfield.
 - 1898 26" of snow in Milwaukee on February 23.
 - 1905 Termed the Mataafa Storm, this Great Lakes tempest resulted in the loss of 28 vessels and 240 men on November 28.
 - 1913 A November gale strikes the Great Lakes on November 7 resulting in 35 ft. waves with a sustained wind speed of 60mph.
 - 1914 Start of World War I
- Weather data obtained from: <http://www.wunderground.com/climate/extremes.asp>.*

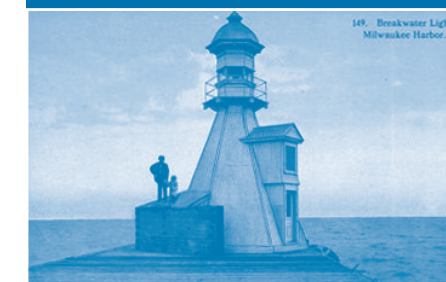


Bay View "Postcard Collection" – Now Available!

Bay View "Postcard Collection" – Now Available! There are photos of Milwaukee skyline, the lakefront, Bay View beaches, and Humboldt Park. A few are shown here. We have prints available in 3 sizes (3x5, 5x7, and 8x10), perfect for framing and wonderful gifts! Come by to see them!



Entrance to the Harbor, Milwaukee, Wis.



Breakwater Light, Milwaukee Harbor.



BATHING BEACH, SOUTH SHORE PARK, MILWAUKEE, WIS.



BEACH HOUSE, HUMBOLDT PARK, MILWAUKEE, WIS.

Making a Gift in Your Will

"We make a living by what we get, but we make a life by what we give."

- Winston Churchill

Bay View Historical Society depends on the generosity of individuals both now and in the future. The simplest way you can make a future gift to Bay View Historical Society is through your will. Planning to make a gift this way allows you to make a difference in the future – even after you are gone. Please consider remembering Bay View Historical Society in this way.....thank you. For more information, contact Nancy Tawney at (414) 744-5674 or email ntawney@aol.com



It's time to renew your membership for 2015 unless you are a lifetime member

Yes, I want to join/renew my membership to Bay View Historical Society!

MEMBERSHIP DUES:

- | | | | |
|---|---------|---|---------|
| <input type="checkbox"/> Individual | \$20.00 | <input type="checkbox"/> Household | \$30.00 |
| <input type="checkbox"/> Senior (65 or older) | \$17.00 | <input type="checkbox"/> Senior Household | \$25.00 |
| <input type="checkbox"/> Nonprofit/Small Business | \$30.00 | <input type="checkbox"/> Corporate | \$55.00 |
| <input type="checkbox"/> Also enclosed is a tax deductible contribution of \$ _____ | | | |

ENCLOSED IS MY CHECK IN THE AMOUNT OF: \$ _____

Please make checks payable to the Bay View Historical Society

Name: _____

Address: _____

City: _____ State: _____ Zip: _____

Email: _____ Phone: _____

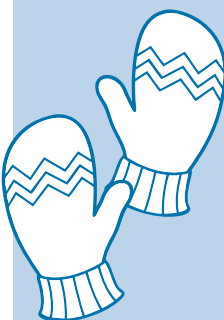
☐ Please contact me! I'd like to volunteer for a project or committee.

MAIL FORM AND CHECK TO:

Membership Chairman
Bay View Historical Society
2590 S. Superior St.
Milwaukee, WI 53207-1954

We have many new benefits for
members, see the list at
www.bayviewhistoricalsociety.org

Also join us on facebook!



New! Mittens For Members

Our wonderful member Jennifer Esh makes soft, warm adult mittens from boiled wool sweaters! You are invited to have a pair with our receiving your membership renewal by december 31st. The first 50 to renew will be able to pick a pair at upcoming events including open house, holiday gathering, house music concerts, decorating at the BB House, and the Avalon Theater opening. Be sure to select just the right pair for our Wisconsin winter!

BVHS memberships make a terrific gift!

Just include the information on an additional sheet of paper with your renewal.

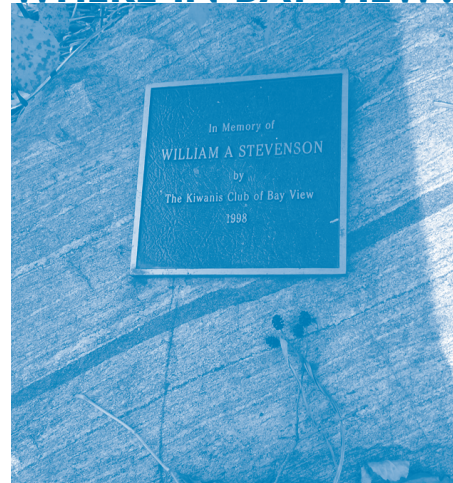
Your Name in Print!

Write an article about Bay View history or of historical interest
to BVHS members and we may run it in The Historian!

Word documents are ideal and articles must be 1,000 words
or less – photographs are a plus!

Contact **Lisa Ann Jacobsen**,
414-610-5678 or **lisaann.jacobsen@gmail.com**.

WHERE IN BAY VIEW?



*Where in Bay View was this
photo taken? Look for answer
in **Where in Bay View?** in the
Febuary issue of **Historian**.*

PHOTOGRAPHY BY LISA ANN JACOBSEN

Last issue's photo featured the façade of the
building housing the Hi-Fi Café building at
2640 S. Kinnickinnic Avenue

On The Street Where You Live

BY LISA ANN JACOBSEN

Carol Street

This street was named for a very special
Christmas Carol. Bay View resident Arthur
Wenz, born in Milwaukee in 1880, was
one of the developers of Bay View. He
named this street after his newborn baby girl
who was named Carol...born in 1907 on
Christmas Day. Also named after his daugh-
ter was one of his businesses, the Carol
Investment Company.

*Baehr, Carl. Milwaukee Streets: The Stories
behind Their Names. Milwaukee, WI: Cream City
Press, 1995.*

PRESIDENTS MESSAGE:

Hello Members and Friends of Bay View Historical Society!

It seems impossible that we are about to celebrate the holidays and close out 2014! While December tends to keep us all busier than ever, it's also a great time to reflect on the past and plan for the future.

My thoughts are focused on encouraging a sense of community, an important centerpiece of our mission here at Bay View Historical Society. What can we learn about Bay View by looking at the history of the Brinton family? What else can be done to create a stronger community at this moment in time?

During the late 1800's work was demanding, resources scarce, residential electricity and plumbing barely available, and medical assistance limited, the Brinton's moved from Michigan to Bay View, WI. Here they found more opportunity than community! Their efforts tell the story of a family who built a Gothic Revival home in 1873 that would serve as a neighborhood hub that welcomed immigrant workers and modeled what we'd now consider a settlement concept, helped neighbors learn to speak and read English, and shared many meals with diverse cultures. In spite of their differences, those who came to live in Bay View found a common cause. And Beulah Brinton had the determination and courage to provide ways in which individuals felt they belonged to a community and could cooperatively live and work together.

As Bay View changes and grows in both number and diversity, let's encourage each other to practice more tolerance, learn more about our area history, and show kindness to one another. Our Historical Society is so fortunate to welcome more members, volunteers, activities, and gifts each year. THANKS SO VERY MUCH, it truly feels like a community!

We want you to know that BVHS Board is planning for additional house restoration, events, and partnerships in 2015 to better serve our members. Be sure to read this entire newsletter and check our website www.bayviewhistoricalsociety.org and facebook page for all upcoming news and events. We can make our community a better place, and it is up to us to believe and take action!

Healthiest and Happiest Holidays to you and your family,

Susan

Letters to the Editor

Dear Susan:

I appreciate the mention of my receipt of the Frank P. Zeidler Public Service Award in the October 2014 Issue of the Bay View Historian.

I must point out that the story wrongly credited me as helping to plan and erect the State Historical Marker Rolling Mill site. I had absolutely nothing to do with the creation of that notable marker.

In fact, I salute those who did work hard to build the marker, to work through the red tape to get it approved, and to assure that it was recognized by the Wisconsin Historical Society. As I understand it, the real credit must go principally to John Ebersole, Bob Fennig, Bob Quinsey, and John Sternkopf.

The Wisconsin Labor History Society, which has sponsored the annual Bay View Tragedy Commemoration each May, is grateful to all of those whose foresight gave us a site that could be used to assure that this important part of our history is not forgotten.

Yours sincerely,

Kenneth A. Germanson

More on page 5

The Bay View Historian is published six time
a year by The Bay View Historical Society.

President:
Susan Balje

Vice President:
Annie Hahn

Secretary:
Nancy Tawney

Treasurer:
Denice Laack

Board Members:
Mary Fisher, Anne Maedye, Candice Owley,
Kevin Patajan, Sheila Semrouw, Nancy Tawney

Committee Contacts

Archives:
Janis Liedtke 414-481-2648

Beulah Brinton House Management:
Anne Maedke 414-483-8093

Beulah Brinton House Operations:
Annie Hahn 414-769-7173

Capital Development:
Nancy Tawney 414-74 4-5674

Education Initiatives:
Megan Kobs mkekobs@gmail.com

Historian Editor:
Lisa Ann Jacobsen 414-313-2293
lisaann.jacobsen@gmail.com

Hospitality:
Mary Fisher 414-744-1770

Landmarks:
John Manke 414-304-5039

Media & Technology:
Kevin Patajan 414-698-5202

Nominating:
Candice Owley 414-899-7070

Open House:
Martin Ziech martinziech@gmail.com

Programs:
Sheila Semrou 414-861-6675
Anne Maedke 414-483-8093

Sunshine:
Nadine Barthuli 414-744-8535

Membership
\$20 Individual/\$17 Seniors (Age 65+)
\$30 Household/\$25 Senior Household
\$30 Non-Profit/Small Business
\$55 Corporate

Bay View Historical Society
2590 S. Superior Street
Bay View, WI 53207
www.bayviewhistoricalsociety.org

The Bay View Historical Society is a non-profit 501 (c)
(3) organization. Your donations and in-kind gifts are
tax-deductible as allowed by law.



Happy Birthday Bay View Historical Society *Continued*

Trowbridge Street School 1943 E. Trowbridge Street (1893-94) May 20, 1994

Dover Street School 619 E. Dover Street (1889) December 5, 2001

Wisconsin Champion European Copper Beech Tree South Shore Park,
across from 2116 East Estes Street. September 24, 2005

Immaculate Conception Catholic Church 1023 E. Russell Avenue (1907) May 20, 2006

Keller Winery 324 E. Deer Place (1909) September 30, 2006

Groppi's Grocery 1441 E. Russell Avenue (1900) June 21, 2008

South Shore Park Pavilion 2900 S. Shore Drive (1933) November 10, 2008

Delaware House 2499 S. Delaware Avenue (ca. 1870) June 27, 2009

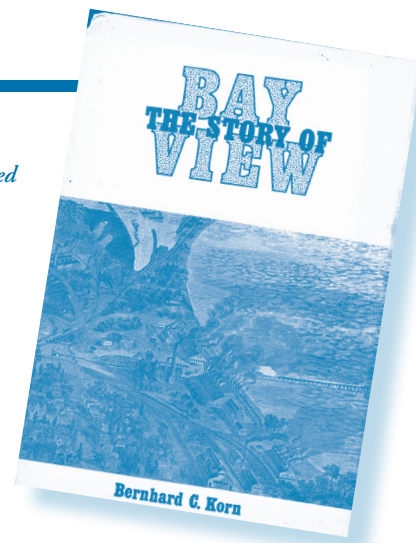
Eschweiler House 2445 S. Kinnickinnic Avenue (1903) June 27, 2010

Joseph Williams House 606 East Homer Street (1865) June 18, 2011

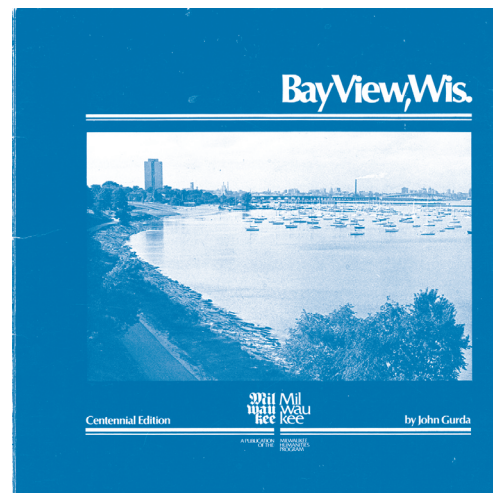
T.H. Stemper Company 1125 E. Potter Avenue June 2012

Pryor Avenue Well 1700 block of East Pryor Avenue (1882) June 2013

The society was so active that after only seven years in existence, it received the Reuben Gold Thwaites Award. The trophy is the Wisconsin Historical Society's highest recognition of distinction awarded annually to a "...historical society for continued excellence for its overall service to its community over a period of at least five years." Historical societies are eligible to receive the award every 25 years, so right on schedule, the Bay View Historical Society received the award 25 years later in 2011. In 1986, Bay View Historical Society President Betty Pum nominated the society for the award, while in 2011 Ron Winkler nominated the society.



Bernhard C. Korn's *The Story of Bay View* was published in 1980.



John Gurda's *Bay View, WI* was published in 1979.

Avalon Theater – Opening Dates!

With great excitement we are announcing the soft opening of Bay View's AVALON THEATER dates and details from owner Lee Barczak!!

Our magnificent atmospheric movie theater will be open for Bay View Historical Society's donors with these special events and featuring a new release movie, *The Hobbit: The Battle of the Five Armies!* Here's the schedule:

Monday December 15 – Special tours capture Avalon history & a marathon of movies! You are welcome to see three movies based on the 1937 J.R.R. Tolkien's novel. The trilogy includes, *The Hobbit: An Unexpected Journey* (2012), at 12:30pm, *The Hobbit: Desolation of Smaug* (2013) at 3:45pm and

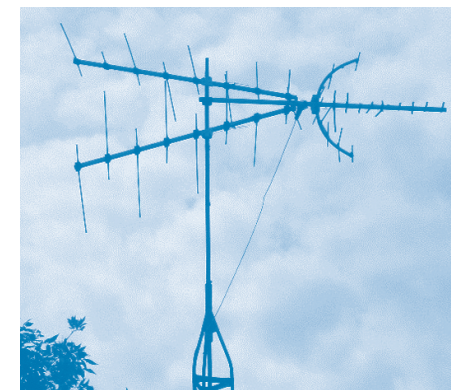
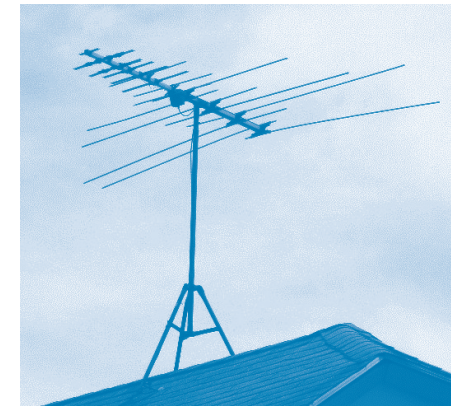
new release *The Hobbit: The Battle of the Five Armies* at 7:15pm! Tours of the restored theater will be conducted during intermissions, and an opening event at 6 pm. Share your story of the Avalon Theater in the oral history booth and take home a commemorative program and other treasures!

Tuesday December 16 – 6pm tour, 7pm movie: *The Hobbit: The Battle of the Five Armies*. This evening is dedicated to ticket holders from the community and will capture stories of the Avalon with a special take home program.

Wednesday December 17 – 6pm tour, 7pm movie: *The Hobbit: The Battle of the*

Five Armies. This evening will feature artists who submitted posters to capture the essence of the Avalon Theater. You'll also be invited to share personal remembrances of visiting the Avalon and receive a special take home program.

Some tickets are already reserved, you will be contacted by email or phone! If you need any further assistance, please let us know and thank you so very much for your donation and patience while much restoration has been going on! If you know of others who might want to enjoy these opening dates and fundraiser for Bay View Historical Society contact us: bayviewhistoricalsociety@gmail.com



Passing, Seen

BY BILL O'BRIEN

How many channels?

When and where I grew up there were four network television stations (2, 5, 7, and 9) and an NET affiliate (11). I was an adolescent when Very-High Frequency (VHF) and Ultra-High Frequency (UHF) broadcasts joined the mix. Neighbors, tired of fiddling with rabbit ears, had exterior antennas installed, most of which gave the appearance of a triangle floating above their house. Meanwhile, Lois lived in a house on Twelfth Street with a long wire antenna strung inside the attic.

Your resident engineer can explain more, but the essence of a VHF or UHF antenna is a single "driven" element receiving the signal and feeding it to the television. A longer element behind it is a reflector. Shorter elements ahead of it are "parasites" that amplify the signal. A VHF antenna has forward elements of the same length, giving it the look of a narrow floating rectangle. The forward elements of a UHF antenna decrease in length the further ahead they are, making for a delta shape. Both types are referred to as "Yagi" antennas, although they were invented by Shintaro Uda. Hidetsugu Yagi was Uda's junior colleague in the 1920s, but the first to file a patent. It's something like Amerigo Vespucci getting

his name attached to the lands spotted years earlier by Columbus. The crossbar or "boom" carrying the elements can also branch up and down to carry additional elements. A house up the block from ours has an elaborate array on a substantial tower.

While such equipment is still available for purchase, the advent of cable service and satellite dishes has essentially outmoded it. As older rigs go out of service, many are removed, leaving only their supporting tripod on the ridge line.

As more roofs get redone, the scarcer these mounts and masts and antennas will become. The house north of ours has lost its old set this summer when the place was re-roofed before new neighbors moved in. They have really young children, so I've written Santa about how easy landing there will be this year.



Letters to the Editor *Continued*

To Editor:

I am prompted to write after finding the enclosed photo among the effects of the late Dorothy Trammel who was a member of Bay View Historical Society. The photo was taken in 1908 at about Pryor Avenue and South Shore Drive, which shows four boys with their "ice polo" or shinny sticks. The game was called LaCrosse and was played on ice, perhaps at the lakefront or Deer Creek. The other whitish sticks are perhaps the goal posts. The game involved opposing groups hitting a hard ball towards the goal posts. The shape of those sticks prompted me to look in my attic where I remember seeing something similar years ago and there I found one of those LaCrosse sticks that belonged to my father, who was born in 1900.

Sincerely,

Sherman Adams

